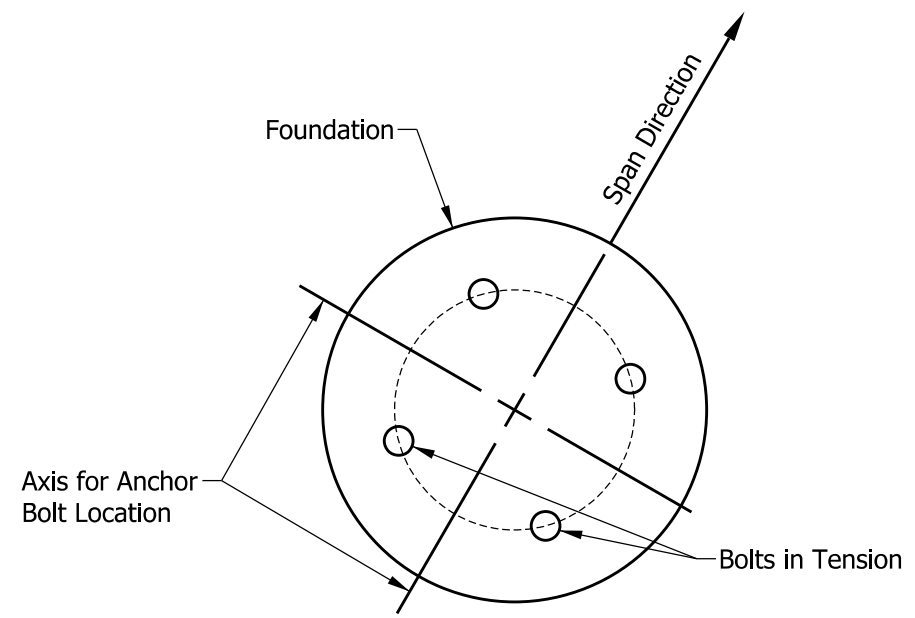
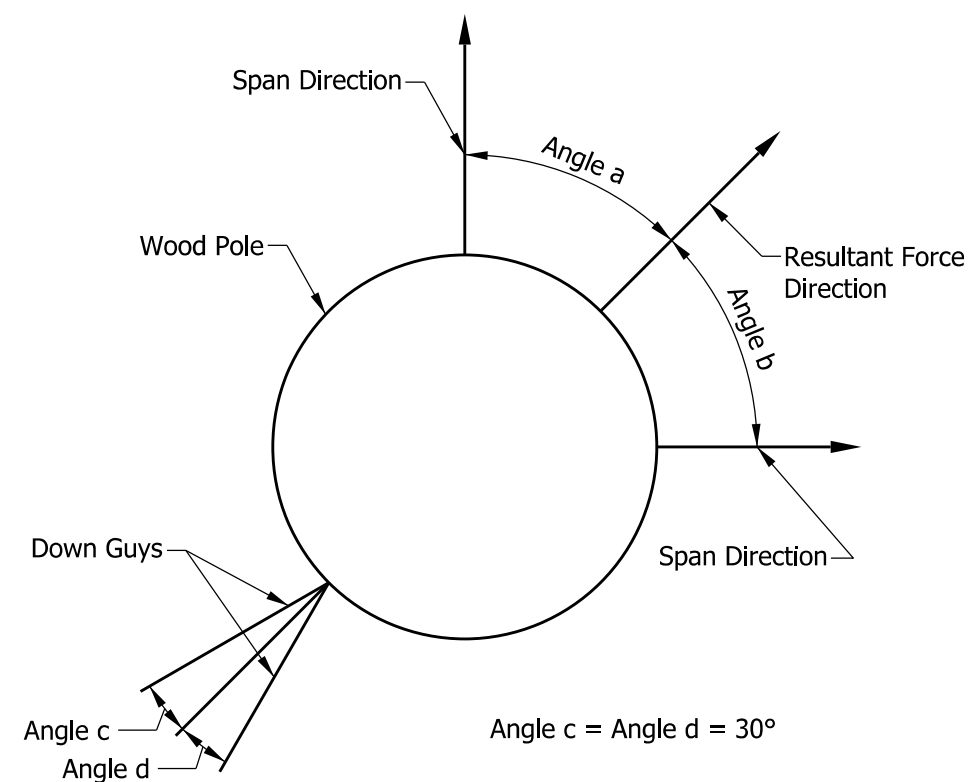


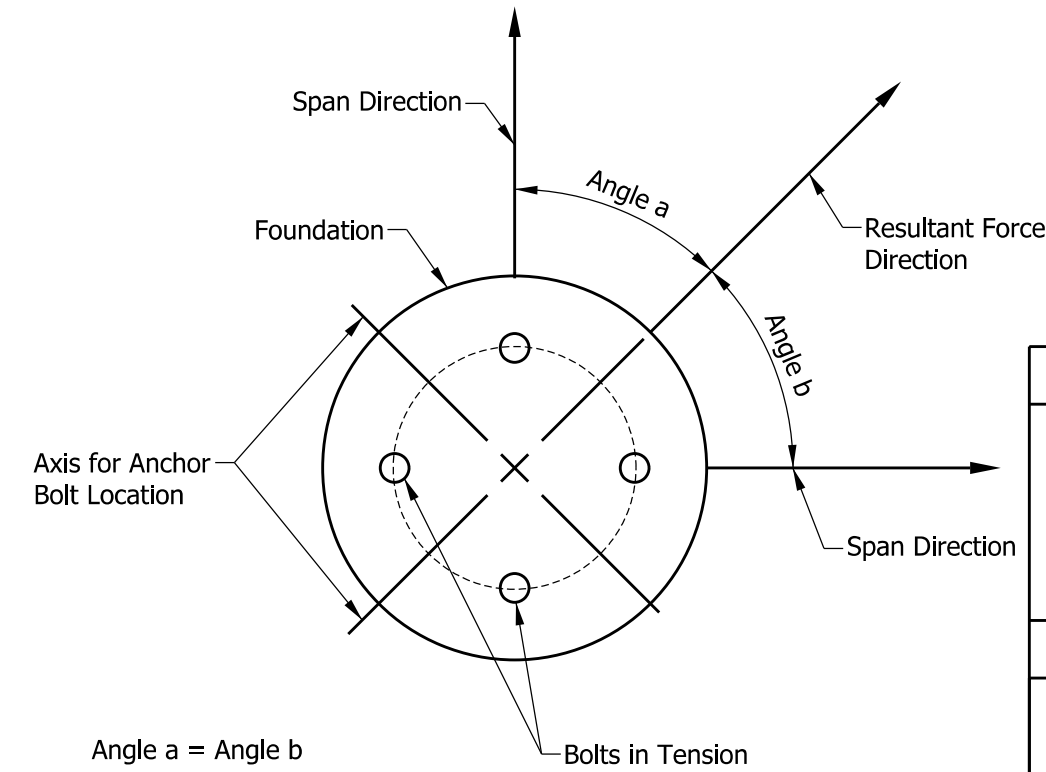
**WOOD POLE
GUY ALIGNMENT
(1 span)**



**STEEL STRAIN POLE
ANCHOR BOLT ORIENTATION
(1 span)**

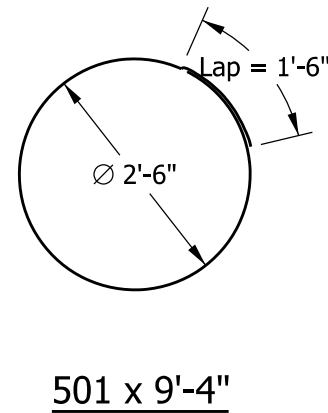
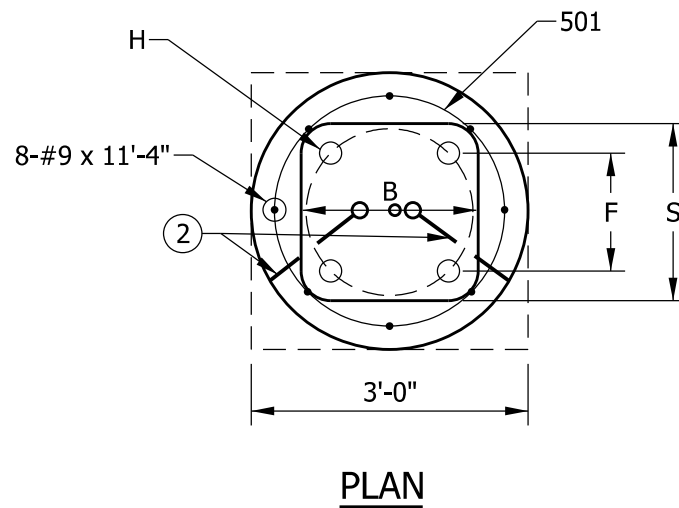
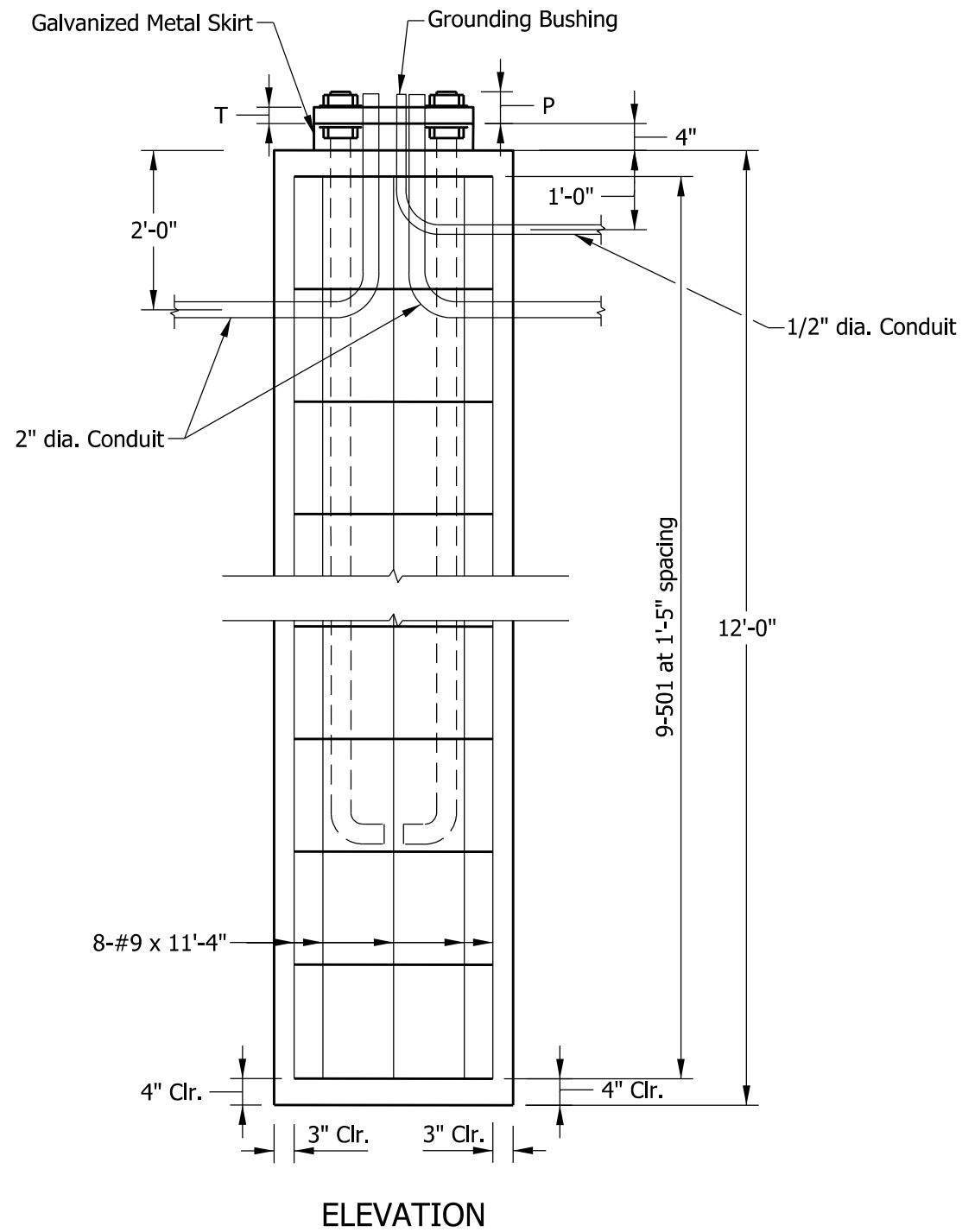


**WOOD POLE
GUY ALIGNMENT
(2 spans)**



**STEEL STRAIN POLE
ANCHOR BOLT ORIENTATION
(2 spans)**

INDIANA DEPARTMENT OF TRANSPORTATION	
SIGNAL POLES GUY ALIGNMENT AND ANCHOR BOLT ORIENTATION SEPTEMBER 2013	
STANDARD DRAWING NO.	E 805-SGSC-01
	/s/ <i>Alfredo B. Hanza</i> 02/27/13 DESIGN STANDARDS ENGINEER DATE
	/s/ <i>Mark A. Miller</i> 03/27/13 CHIEF ENGINEER DATE



NOTES:

1. A minimum of 2 - 2-in. dia. conduit inlets shall be installed for each foundation.
- ② Make a permanent line on top of the concrete foundation indicating the direction of each 2-in. conduit exit.

BASE PLATE AND ANCHOR BOLT DATA

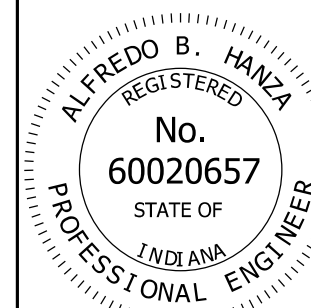
Anchor Bolts	B	F	H	P	S	T	Pole Size	Foundation
2 1/4" x 8'-0"	1'-10"	1'-3 1/2"	2 3/4"	4 3/4"	1'-11"	2 1/2"	1'-3" x 30' 1'-5" x 36'	3'-0" x 12'

INDIANA DEPARTMENT OF TRANSPORTATION

SIGNAL STRAIN POLE, STEEL,
FOUNDATION DETAILS

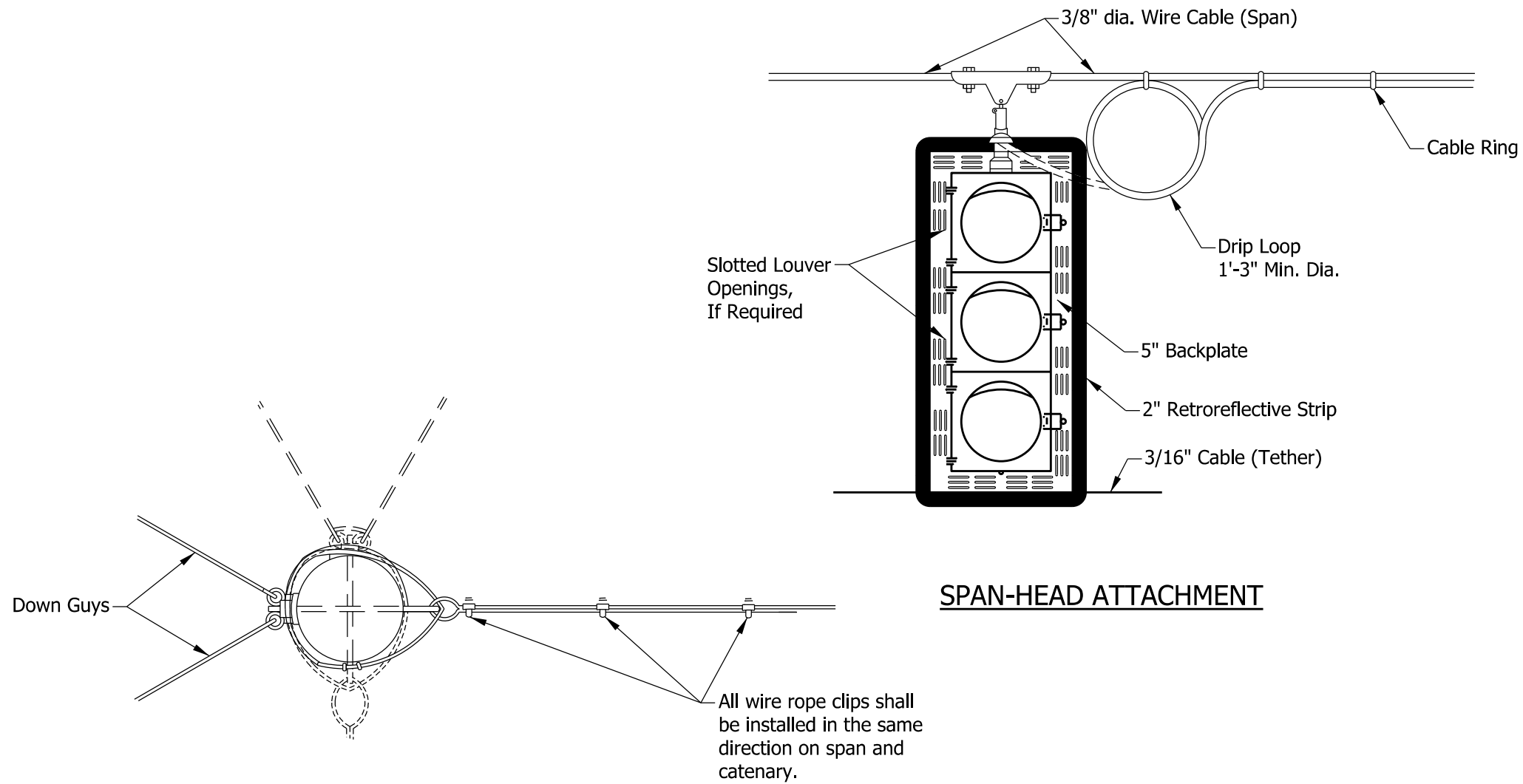
SEPTEMBER 2013

STANDARD DRAWING NO. E 805-SGSC-02



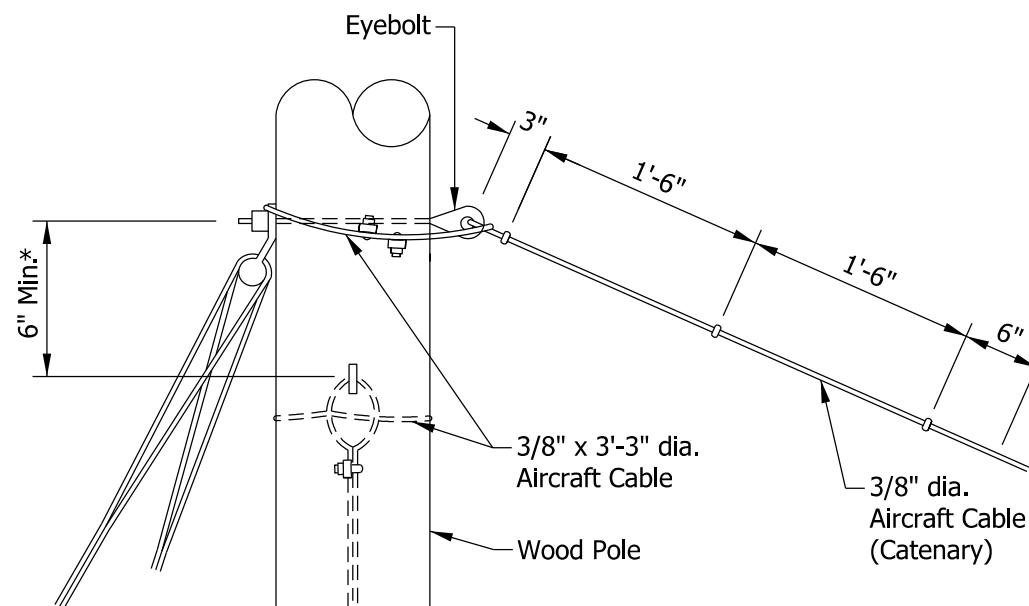
/s/ Alfredo B. Hanza 02/27/13
DESIGN STANDARDS ENGINEER DATE

/s/ Mark A. Miller 03/27/13
CHIEF ENGINEER DATE



SPAN-HEAD ATTACHMENT

TOP VIEW



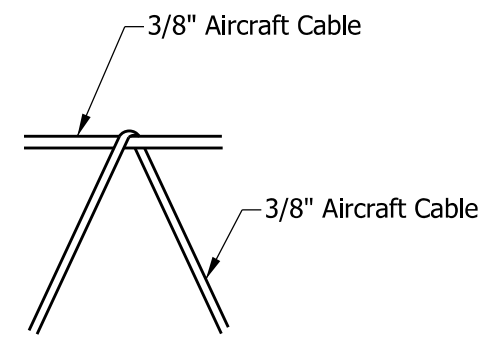
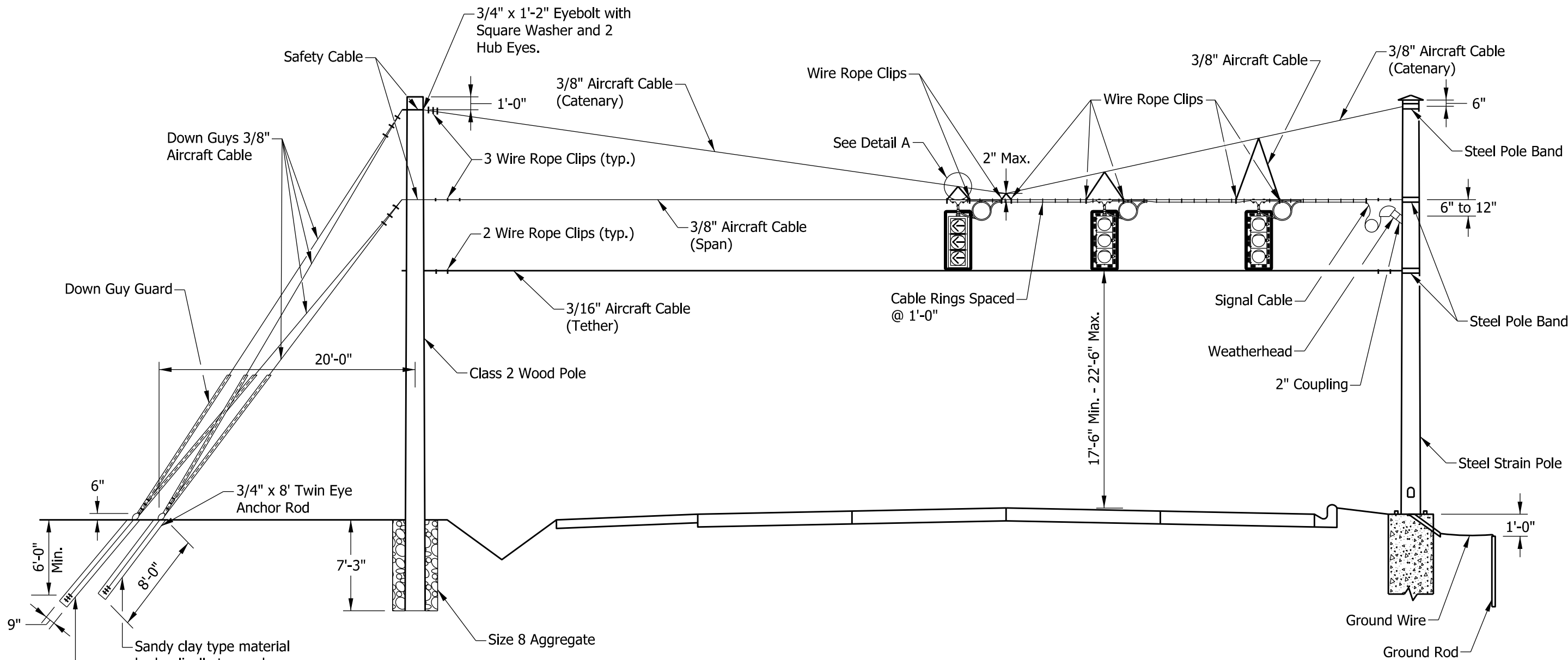
SAFETY CABLE AND EYE BOLT DETAIL

* If more than one catenary is attached to pole.

NOTES:

1. Installation is the same for steel strain poles except pole bands will be used.
2. Aircraft cable shall use a heavy closed wire rope thimble at contact with pole bands.

INDIANA DEPARTMENT OF TRANSPORTATION	
SIGNAL CABLE SPAN AND CATENARY ATTACHMENT	
SEPTEMBER 2013	
STANDARD DRAWING NO.	E 805-SGSC-03
	/s/ <i>Alfredo B. Hanza</i> 02/27/13 DESIGN STANDARDS ENGINEER DATE
	/s/ <i>Mark A. Miller</i> 03/27/13 CHIEF ENGINEER DATE



DETAIL A

INDIANA DEPARTMENT OF TRANSPORTATION	
SIGNAL POLES SPAN, CATENARY & TETHER DETAIL SEPTEMBER 2013	
STANDARD DRAWING NO.	E 805-SGSC-04
	/s/ <i>Alfredo B. Hanza</i> 02/27/13 DESIGN STANDARDS ENGINEER DATE
	/s/ <i>Mark A. Miller</i> 03/27/13 CHIEF ENGINEER DATE